

Anser "Drive Through" Math Supply Pickup

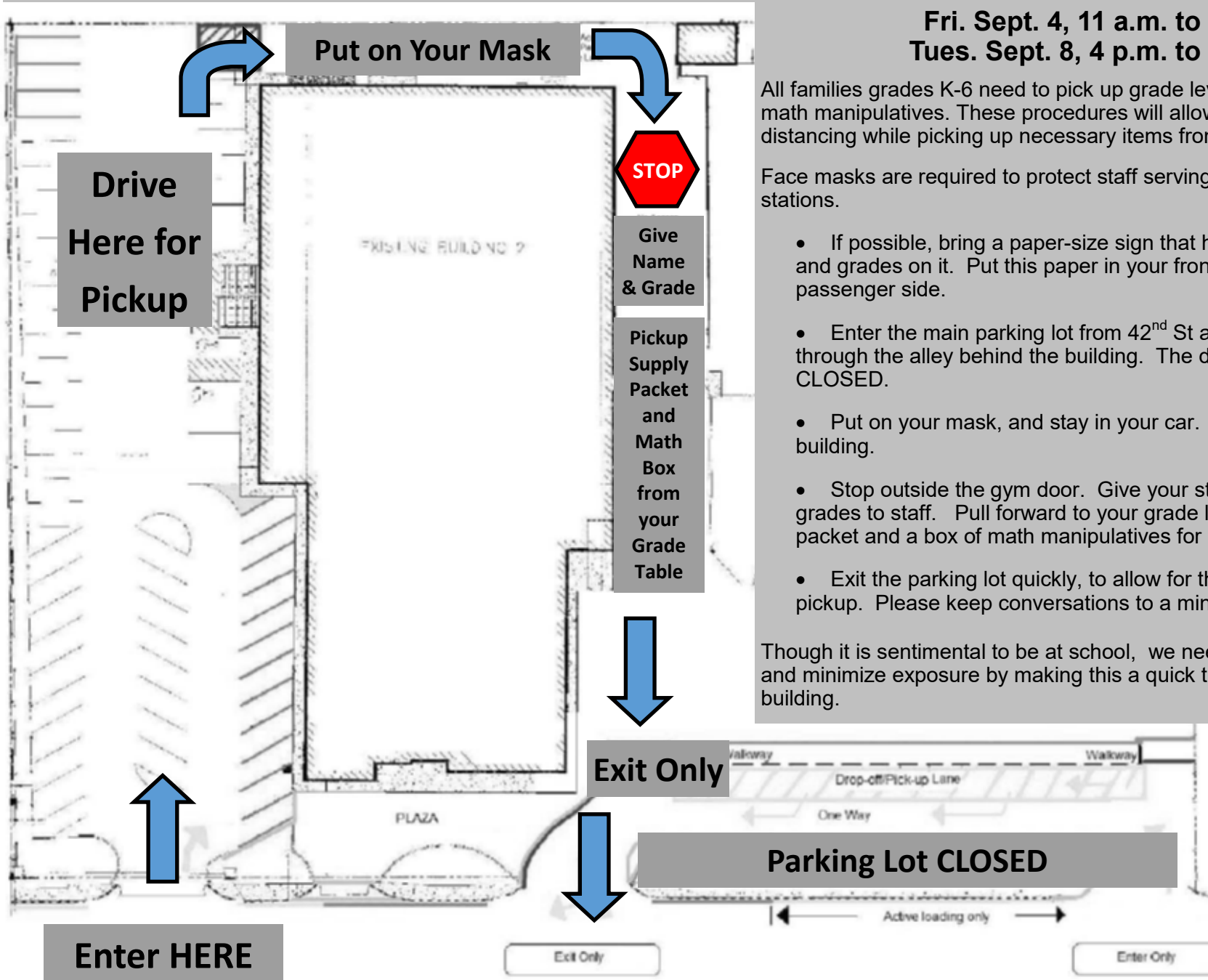
Fri. Sept. 4, 11 a.m. to 2 p.m.
Tues. Sept. 8, 4 p.m. to 6 p.m.

All families grades K-6 need to pick up grade level packets and boxes of math manipulatives. These procedures will allow for safe social distancing while picking up necessary items from school.

Face masks are required to protect staff serving you at the drive through stations.

- If possible, bring a paper-size sign that has your students' names and grades on it. Put this paper in your front dash window, passenger side.
- Enter the main parking lot from 42nd St and Adams, and line up through the alley behind the building. The drop off lane lot will be CLOSED.
- Put on your mask, and stay in your car. No families will enter the building.
- Stop outside the gym door. Give your students names and grades to staff. Pull forward to your grade level table. Pick up a packet and a box of math manipulatives for each student.
- Exit the parking lot quickly, to allow for the next vehicles to pickup. Please keep conversations to a minimum.

Though it is sentimental to be at school, we need to keep everyone safe and minimize exposure by making this a quick trip around the school building.



Drive Here for Pickup

Put on Your Mask

STOP

Give Name & Grade

Pickup Supply Packet and Math Box from your Grade Table

Exit Only

Parking Lot CLOSED

Enter HERE

Exit Only

Enter Only