

COMMUNITY BASED CURRICULUM + ELECTIVES

2016-2017

Welcome To Anser! We are excited to begin a fun year and hope you had a fantastic summer. Please read below for information on both CBC and Electives programs. This newsletter is lengthy, but specifically written with new families in mind.

Big news:

- There will no CBC/Electives fees this year, except for Winter Grit session skiers and snowboarders. More information about this option will be available in late fall.
- Primacy of Self Discovery Performance Session is now in the fall. We are excited to kick off the school year with the very popular, choice based, confidence building session!

PROGRAM OVERVIEW

Community Based Curriculum (CBC) and Electives are unique Anser programs dedicated to service learning, exploring new ideas, nurturing creativity, building confidence, connecting to and through our community and cultivating stewardship of our natural world. The program builds a foundation for confident creative thinkers.

Students have the opportunity to participate in 4-8 week sessions based in STEM Education, Visual Arts, Adventure, Physical Fitness, Performing Arts, Service and Community. Modules are based on EL Education's design principles such as:

- The Primacy of Self Discovery
- The Having of Wonderful Ideas
- Empathy and Caring
- Diversity and Inclusion
- Service and Compassion
- The Natural World
- Collaboration and Competition

The CBC/Electives program also provides Anser students opportunities to experience service learning in partnership with outstanding local agencies making a difference in our community. Anser students learn the value of volunteerism, citizenship, and contributing to causes that change the world. Parents volunteer by coordinating modules, driving students off campus, and volunteering alongside children to make a difference together.

HOW IT ALL WORKS

Age Groups for CBC/Electives:

- **Intro to CBC:** Kindergarten and 1st grade- shorter classes and consistent sessions.
- **CBC:** Grades 2,3,4,5
- **Electives:** Grades 6,7,8

Once a week all Anser students leave their classrooms to explore new learning opportunities in visual arts, music, athletics, performing arts, service, STEM and more. Some may go to the Visual Arts Studio and some to the STEM lab. Others participate in modules lead by parents or community members on campus, while some (2nd grade and older) leave campus for experiences with community partners. Each 4-8 week module is coordinated by a Visual Arts teacher, STEM teacher, Physical Education teacher, community partner or an Anser parent.

As students get older, they have more opportunity for choice in modules that pique their interest. When students reach Electives all sessions are student choice. Before each session, students are given the opportunity to rank their module choices, and a lottery is held for module placement. Parents who commit to teaching or chaperoning a module or driving at least 5 weeks can opt for their child to receive their first choice in the session lottery.

Parent drivers are necessary to transport students every time our students go into the community, which is where the magic of CBC happens. If every Anser parent drives two times per year, our needs would be more than covered! Watch for a signup genius for opportunities each session, or email Tamara for more information, treames@ansercharterschool.org.

IMPORTANT DATES - COMING SOON!

Module Choice DEADLINE!

- For grades 2/3 and 4/5 only: Survey of choices for Primacy Session due by **Sept 9th**. *Look for module descriptions and online survey emailed home the first week of school.*
- For grades 6th, 7th, and 8th Electives: Survey for Elective choices for Session 1 due by **Sept 16th**. *Look for module descriptions and online survey emailed home the 2nd week of school.*

SAVE THE DATE!

- Primacy of Self Discovery Recital (grades 2,3,4,5) **Nov. 9th**, 6:30-8:30pm
- Electives Performance & Gallery Walk (grades 6,7,8) **Dec. 1st**, 6:30-8:30pm

| | Session 1 | Session 2 | Session 3 | Session 4 | Session 5 |
|--------------------------------------------------------------------------------|---------------------------------------------------|---------------|---------------|-----------------|-----------------|
| K & 1st Grade Thurs Mornings 8:45-10:15 AM | Sept 22-Nov 10 | Dec 1 -Jan 26 | Feb 9-Mar 23 | April 13-May 25 | |
| 2/3 Combo Wed Afternoons 1:00-3:10 PM | Sept 21-Nov 9 Classes posted by Sept. 16th | Nov 30-Jan 11 | Jan 25-Feb 22 | Mar 8-April 12 | April 26-May 24 |
| 4/5 Combo Tues Afternoons 1:00-3:10 PM (Wed. for Winter Grit Session) | Sept 20-Nov 8 Classes posted by Sept. 16th | Nov 29-Jan 10 | | Mar 7-April 11 | April 25-May 23 |
| 6/JH Electives Thurs Afternoons 1:00-2:55 PM | Sept 29-Dec 1 Classes posted by Sept. 23rd | Jan 5-Feb 2 | Feb 16-Mar 23 | April 13-May 25 | |

Green= Primacy of Self Discovery Sessions: ends with evening performance and gallery on final week

Yellow= Regular CBC/STEM/Visual Arts Sessions: rotating, based on student choice for 4&5 grade only

Blue= Winter Grit Sessions: student choice, option for fee-based skiing or snowboarding at Bogus Basin

PARENTS - WE CAN'T DO IT WITHOUT YOU!

Volunteering: Module Coordinators, Chaperones, and Drivers We value parents (and grandparents!) as part of the Anser Community, and believe everyone has a role to play. Volunteers are essential to the success of CBC and Electives Programs, with many roles to fill each week. Volunteering is another great way to get to know your child's friends, classmates, and fellow Anser parents. We encourage you to find a way to spend some of your time with us, whether it be a little or a lot.

Parents are encouraged to share their passion by coordinating modules, or co-coordinating with another parent. Do you love fly fishing, fashion design, mountain biking, or Broadway dance? We would like to talk with you about leading a module! Staff and community instructors are module coordinators too.

Chaperones are needed for each module and are invaluable to instructors as an extra pair of adult eyes and hands. Parents are encouraged to chaperone as often as their schedule allows. This allows a parent a chance to spend time with their child, be a part of their school life and provides the electives program consistency in adult volunteers. Chaperones do not teach the class, though they sometimes may be asked to pitch in and help. Each instructor may use parent volunteers in a different capacity. Often a chaperone's primary job is to help monitor students and make sure that Anser behavior and character expectations are met. Feedback to the CBC/Electives coordinator and an honest assessment of each student's positive participation is much appreciated.

Drivers are needed every time students leave campus. Parents of preschool or younger children are free to bring them along. You are welcome to stay and watch your student's module, or just drop off and pick up. One driver must stay to chaperone with the module instructor, providing at least two adults are with the students at all times.

LET US INTRODUCE OURSELVES

Our team consists of 3 teachers and 1 coordinator. Each has a specific role and may be contacted with questions or concerns regarding these roles. A shared leadership model is how this program succeeds.

We work together to find classes that are enriching and exciting for our students. As a school of revision, we are always evaluating and dreaming of new ideas. We welcome your honest and constructive feedback to continue building a stronger program.

Tamara Reames: CBC & Electives Coordinator

Email: treames@ansercharterschool.org

In 2007, my family "won the lottery!" when my oldest came to Anser as a 5th grader. As a parent volunteer and substitute teacher, I've grown to love this learning community. Now I've won the lottery when I was hired as CBC/Electives Coordinator! Having worked in event planning, program management, and volunteer coordination for over 20 years, and am excited to bring my professional focus to Anser. It's like coming home!



My husband Steve and I moved to Boise from Washington in 1999. We have four Anser kids: alumni Carter (BSU) and Aliya (BHS), and current students Mercia (8th) and Eliana (5th). In my free time, I enjoy cycling, playing music, and trips to the Oregon coast. I can often be found cheering on my kids in swimming, cross country and track.

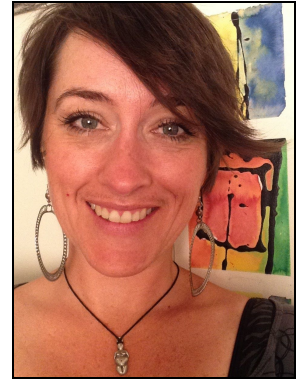
If you have a special skill or talent, a helpful heart, or a dream of something big, I would love to talk with you about finding your unique place at Anser. We value parents (and grandparents!) as part of the Anser Community, and believe everyone has a role to play. I'm here to help you find your niche!

Contact me if you have questions about Community Based Curriculum/Electives programs, ideas or community contact for new modules, driving students, or volunteering at Anser. treames@ansercharterschool.org or (208) 631-6768 (cell).

Anne Moore: CBC & Electives Visual Arts Teacher

Email: amoore@ansercharterschool.org

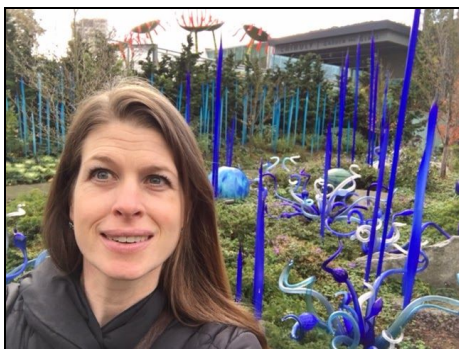
I am a certified teacher with a history of 14 years at Anser Charter School. I taught kindergarten at Anser for 11 years and developed and taught the enrichment program called AAYC for Kindergarten for 4 years. I am now lucky to have the opportunity to teach and develop the visual arts program for the entire school! My dream come true! I am in charge of the Visual Arts portion of CBC and Electives and my other role at the school will be as Art Educator for grades K-5 teaching a specials class each week and integrating visual arts with 6th grade as well as support for the Sixth Grade Year of Service (SOS) Project. I also have the great pleasure of coordinating the Primacy of Self Discovery Session of CBC with Tamara Reames, the new CBC Coordinator. My love for the performing arts makes this piece of my job the icing on the cake!



The door to the studio is always open and you are welcome to join in the fun. I love having volunteers and will utilize your presence in ways that are meaningful to you and the students. If you are an artist, professional or not, please, please let me know!

Email me if you ever have questions about CBC concerning visual or performing arts. I am also here to answer questions concerning visual arts in the Elective program. If you are a new family, please find me and introduce yourself at New Family Orientation on Friday Aug 25th!

I have lived here in Boise for 17 years. I have a 9 year old son, Myron, in 4th grade at Anser. My husband David, Myron and I enjoy music, art, hiking, camping, biking, gardening, and reading.



Brianna Gask-Wilson: CBC & Electives STEM Teacher

Email: bwilson@ansercharterschool.org

Greetings! I have been a teacher at Anser since 2004, with a short 2 year hiatus as a STEM Lab instructor in the West Ada School District. Following 10 years of teaching Anser Upper Childhood (5th/6th) grades, I jumped into a new adventure guiding K-2 students in STEM experiences at Summerwind Elementary. I'm very excited to be back in the Anser community as the CBC/Electives STEM instructor and can't wait to guide students in inquiry based STEM learning experiences!

As native Michiganders, my husband Jeremy and I moved to Boise in the winter of 2004. By August of that same year we had purchased a home and began our teaching careers. Currently we have two young sons, a cat, chickens and a ginormous garden!

The force of community at Anser is what makes this school so lovely and unique. If you have an interest or career in the STEM field, please feel free to drop by or volunteer your time during CBC/Electives. Your insights and experience would be much appreciated! My cell phone number is 208-941-7906.

Alyssa Munch: CBC & Electives Physical Fitness and Health Teacher

Email: amunch@ansercharterschool.org

I am beginning my 15th year at Anser, teaching PE and Health. I have 3 kids—Ollie is a 17 year old athlete at Boise High, Edie is a 14 year old at North Junior High, and Emme is in 5th grade at Anser. I love teaching children, running, yoga, coffee, teaching group exercise, and recently working a bit with Title 9!



EL EDUCATION DESIGN PRINCIPLES

| | |
|--------------------------------------|----------------------------------------------------------------------------------------------------------------------------------------------------------------------------------------------------------------------------------------------------------------------------------------------------------------------------------------------------------------------------------------------------------------------------------------------------------------------------------------------------|
| Primacy of Self Discovery | Learning happens best with emotion, challenge and the requisite support. People discover their abilities, values, passions, and responsibilities in situations that offer adventure and the un-expected. In EL Education schools, students undertake tasks that require perseverance, fitness, craftsmanship, imagination, self-discipline, and significant achievement. A teacher's primary task is to help students overcome their fears and discover they can do more than they think they can. |
| The Having of Wonderful Ideas | Teaching in EL Education schools fosters curiosity about the world by creating learning situations that provide something important to think about, time to experiment, and time to make sense of what is observed. |
| Responsibility for Learning | Learning is both a personal process of discovery and a social activity. Everyone learns both individually and as part of a group. Every aspect of an EL Education school encourages both children and adults to become increasingly responsible for directing their own personal and collective learning. |
| Empathy and Caring | Learning is fostered best in communities where students' and teachers' ideas are respected and where there is mutual trust. Learning groups are small in EL Education schools, with a caring adult looking after the progress and acting as an advocate for each child. Older students mentor younger ones, and students feel physically and emotionally safe. |
| Success and Failure | All students need to be successful if they are to build the confidence and capacity to take risks and meet increasingly difficult challenges. But it is also important for students to learn from their failures, to persevere when things are hard, and to learn to turn disabilities into opportunities. |
| Collaboration and Competition | Individual development and group development are integrated so that the value of friendship, trust, and group action is clear. Students are encouraged to compete, not against each other, but with their own personal best and with rigorous standards of excellence. |
| Diversity and Inclusivity | Both diversity and inclusion increase the richness of ideas, creative power, problem-solving ability, and respect for others. In EL Education schools, students investigate and value their different histories and talents as well as those of other communities and cultures. Schools and learning groups are heterogeneous. |
| The Natural World | A direct and respectful relationship with the natural world refreshes the human spirit and teaches the important ideas of recurring cycles and cause and effect. Students learn to become stewards of the earth and of future generations. |
| Solitude and Reflection | Students and teachers need time alone to explore their own thoughts, make their own connections, and create their own ideas. They also need to exchange their reflections with other students and with adults. |
| Service and Compassion | We are crew, not passengers. Students and teachers are strengthened by acts of consequential service to others, and one of an EL Education school's primary functions is to prepare students with the attitudes and skills to learn from and be of service. |